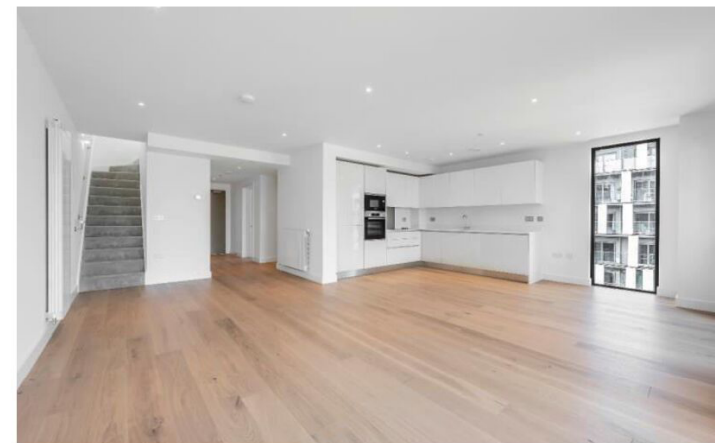
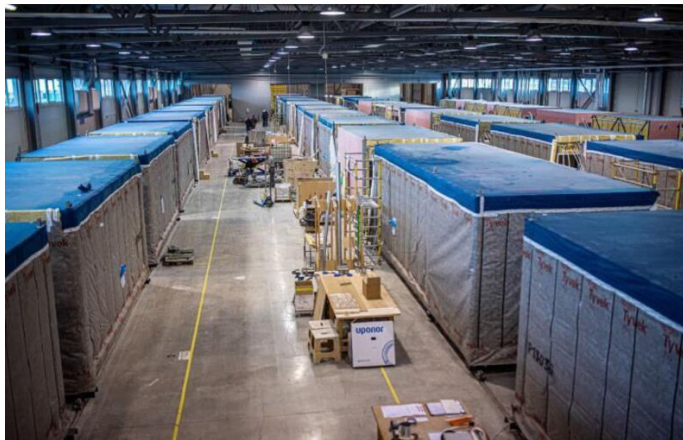


WHITEROCK

WE BUILD MODULAR



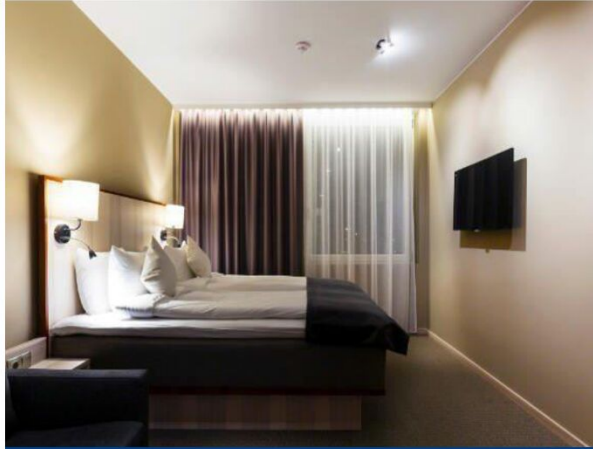
casaplaner

Casaplaner Modulhaus Schweiz
Buechenstrasse 4
CH-8824 Schönenberg
+41 44 780 90 80
info@casaplaner.ch
www.casaplaner.ch



- WHITEROCK offers prefabricated volumetric modular solutions for:
 - Apartments
 - Student and Workers dormitories
 - Hotels
 - Hospitals and clinics
 - Prefabricated PODs and more...
- 120 000 m² per annum capacity
- Worldwide shipping

WE BUILD MODULAR!



HOTELS



RESIDENTIAL BUILDINGS



ELDERLY HOMES



STUDENT HOUSING



WC AND BATHROOM PODs



WORKERS DORMITORIES



HOSPITALS AND CLINICS



CUSTOM SOLUTIONS

WHY MODULAR?

SAFE



Secure your budget from unpredictable expenses

PROFITABLY



Open your project and receive revenue earlier

EFFICIENT



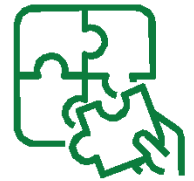
Reduce the labour and site expenses

QUIETER



Build without disturbing neighbours

CLEANER



Reduce the waste and pollution



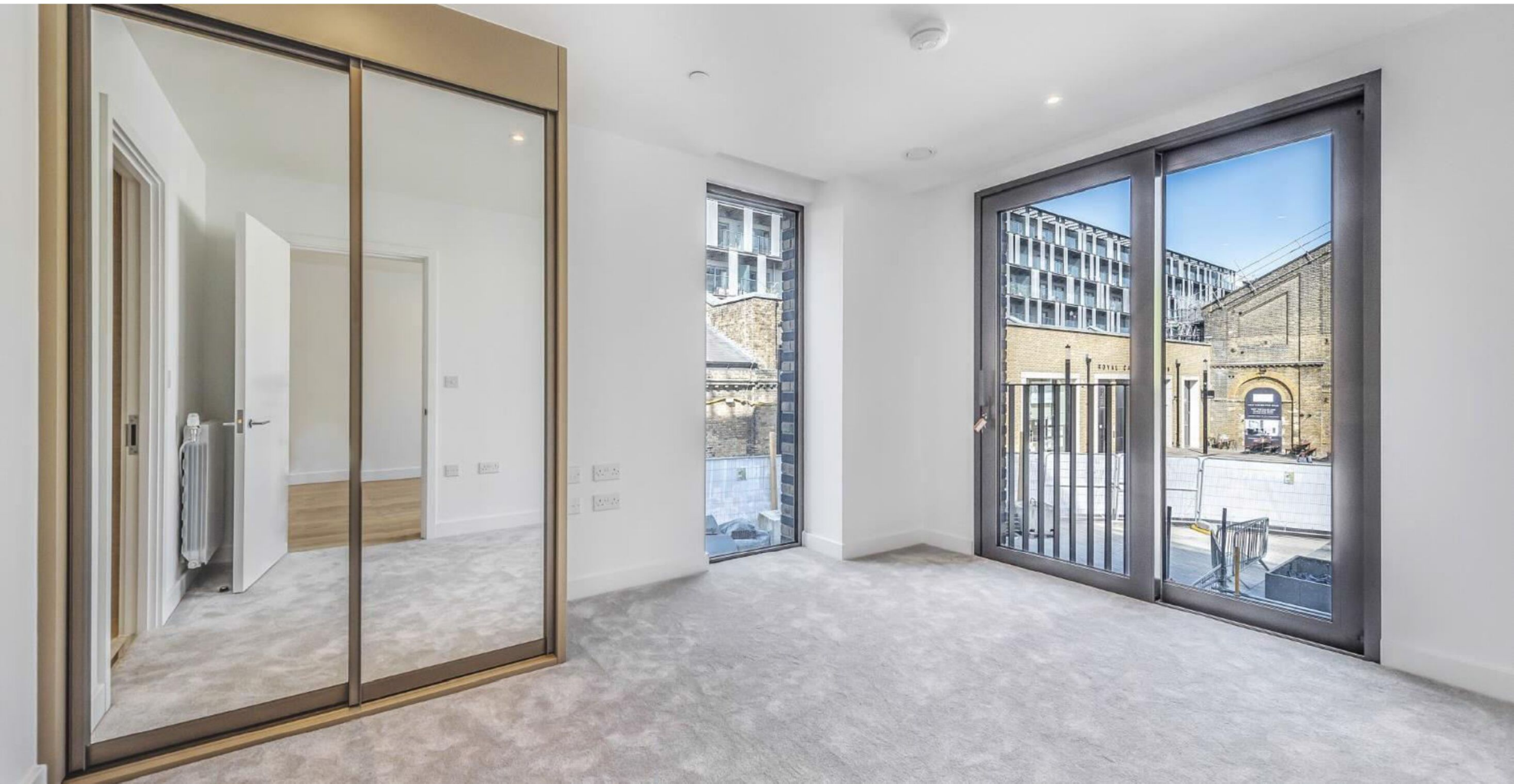
- Micro-living Apartments in a developing area of Stockholm
- 350 apartments, 178 modules, 4 buildings, 7100 m²
- Tallest modular building in Scandinavia



- Berkeley Homes - The Officers House
- 48 modules carefully installed in historical part of London
- Brick cladding
- 19 modern residential flats, finished, including bathroom and kitchen









- Residential project with 30 fully furnished apartments
- Production simultaneously with the site foundation works
- 48 modules were installed in 8 days
- Project realisation time - 11 months









- Apartments in sizes of 40m² to 80m².
- The 3 apartment blocks vary from 2 to 7 floors
- Modular area: 6 000 m²
- Kitchen and bathroom were installed in the factory





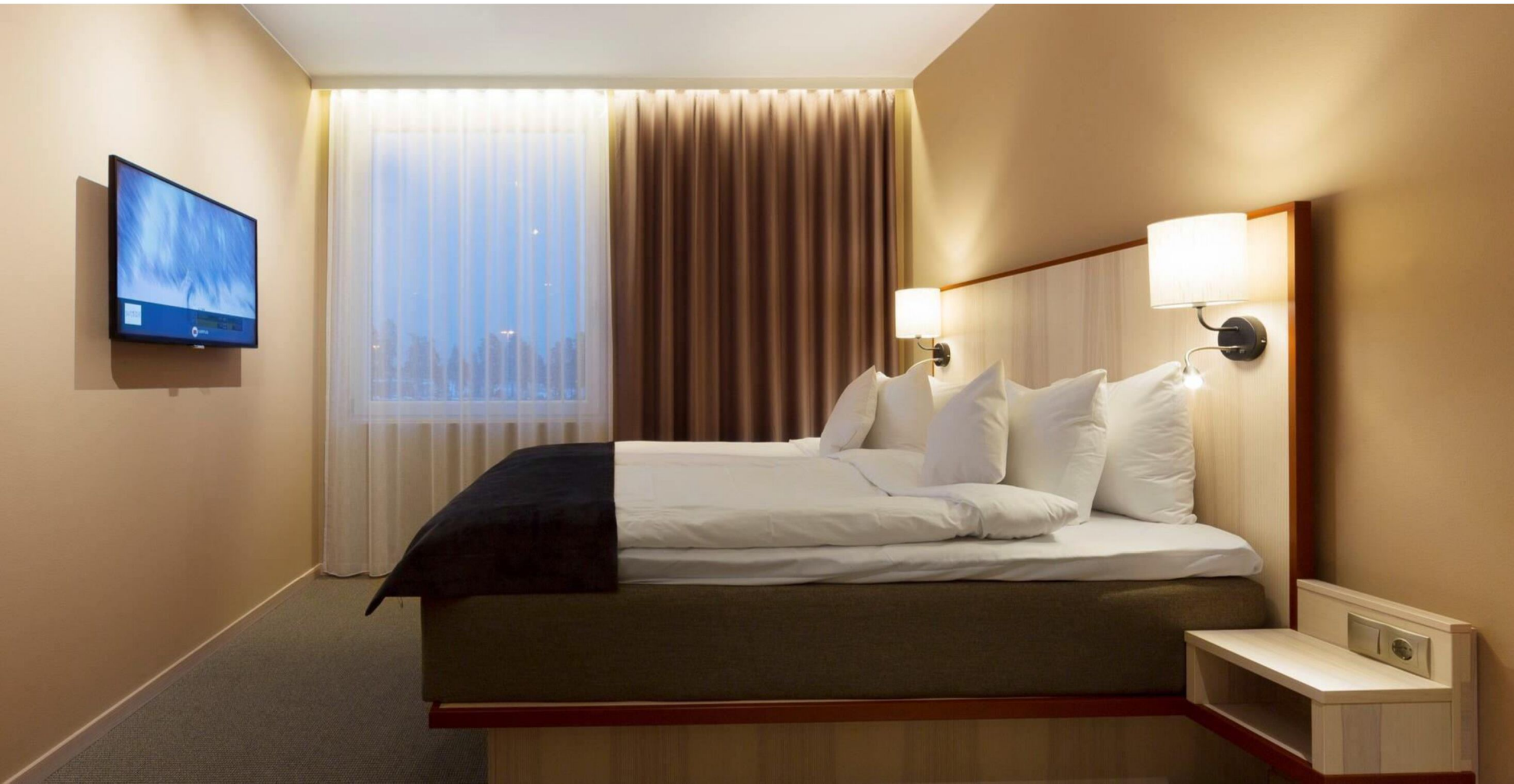
- Largest passive house project
- 64 apartments from 28 m² - 120 m², with terrace
- Modular area: 6 400 m²
- Completely finished in the factory

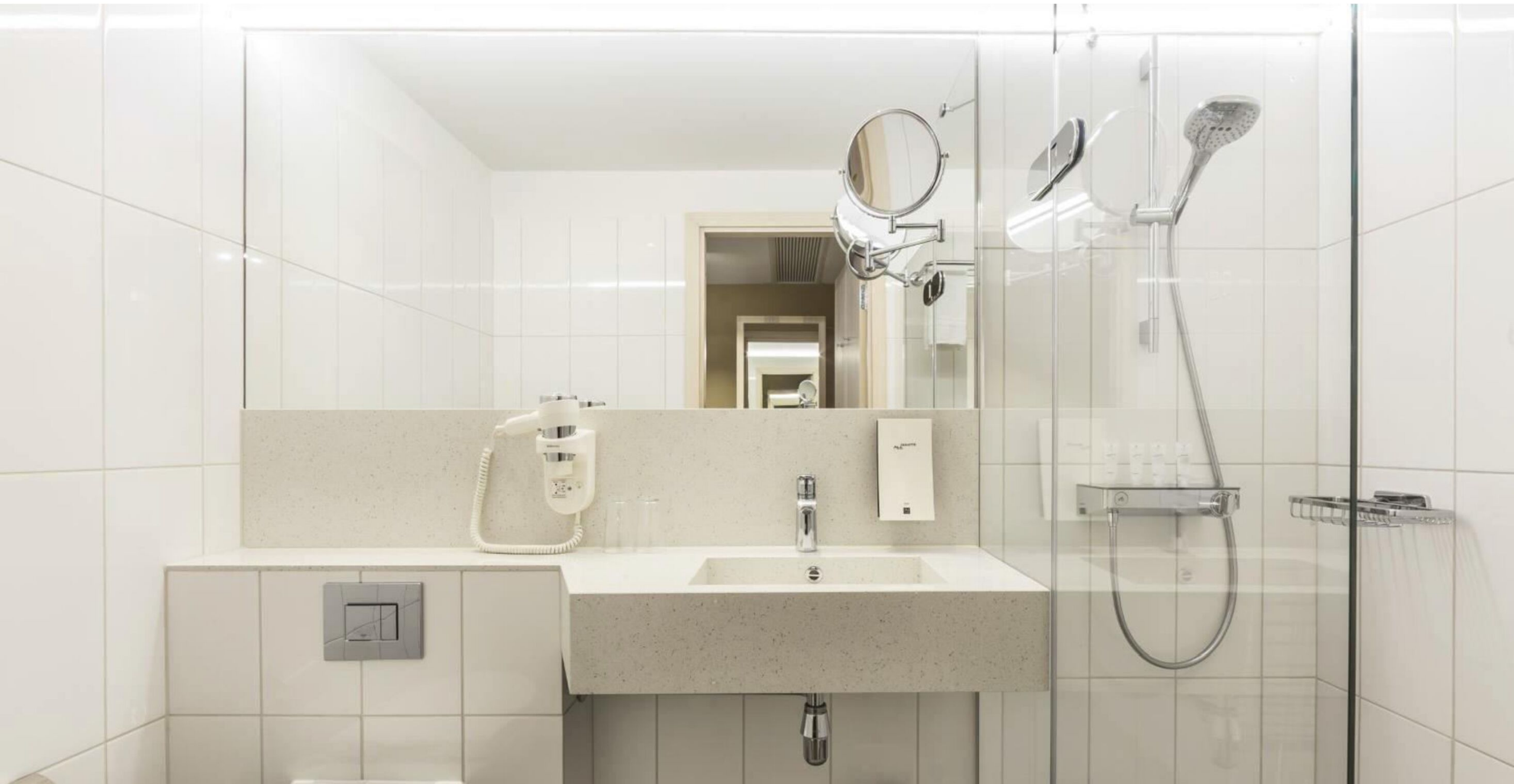


Scandic



- Located in the Airport area, 150 rooms with advanced acoustic parameters
- 153 modules were installed in 4 weeks
- Modular area: 4 100 m²
- Room module with part of the corridor







- 6 floors, 88 rooms
- 48 modules were installed in just 7 days
- Each module includes 2 rooms and part of the corridor.
- Rooms completed in the factory with furniture installed



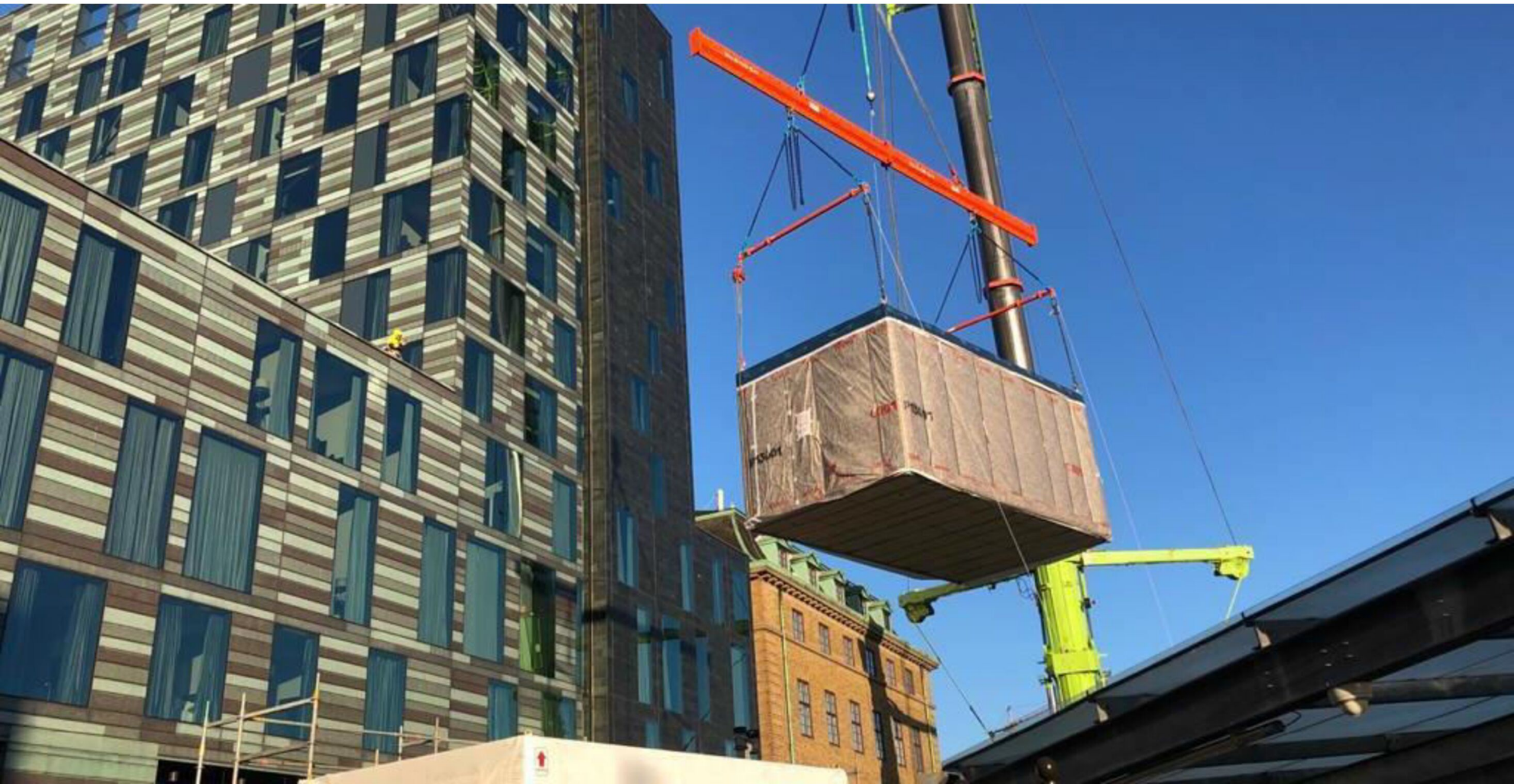




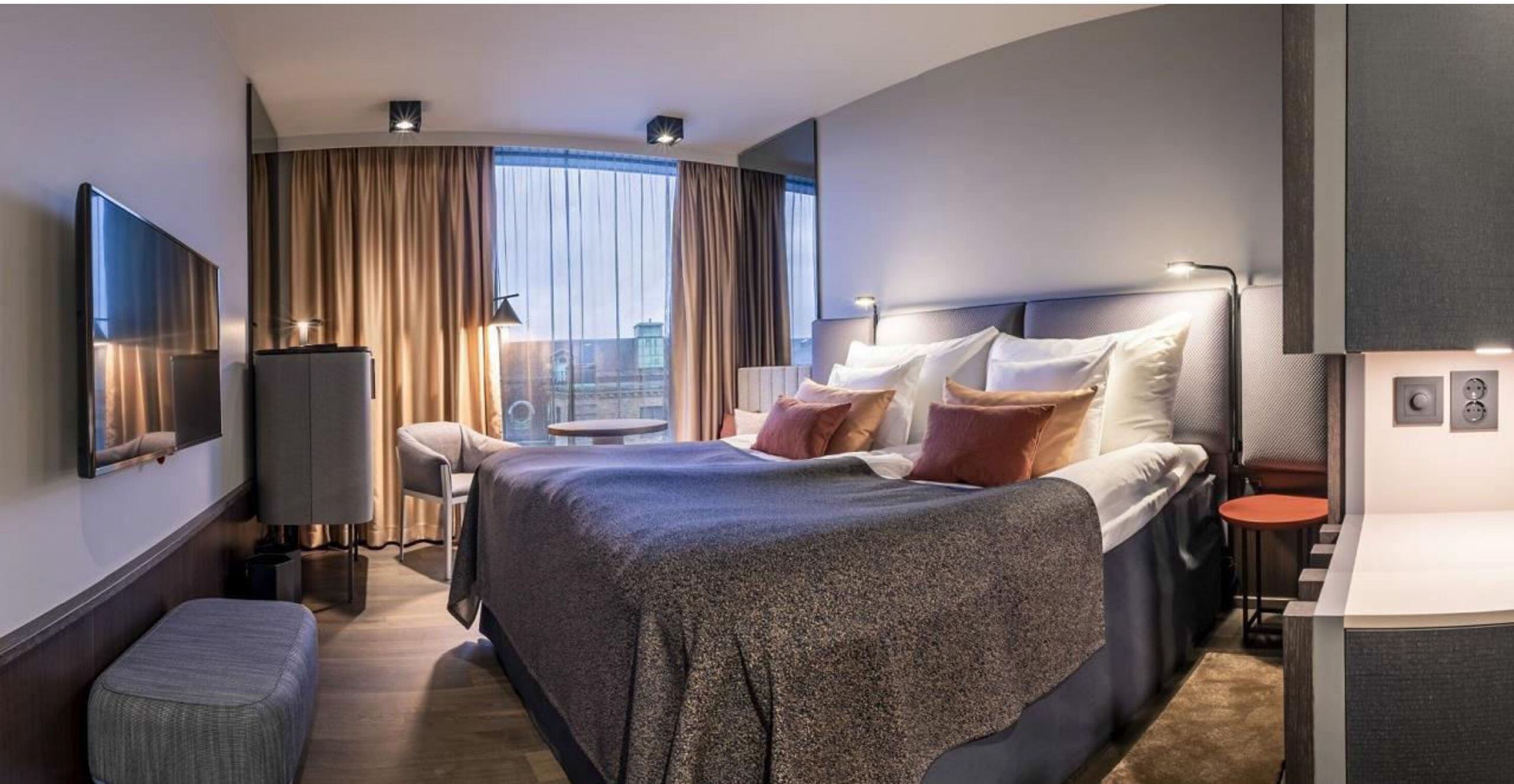


- Hotel extension, 40 rooms
- Location in the heart of Gothenburg
- High Clarion level of materials and finishes
- Quick installation without limiting the hotel work and road closure





















- Bathroom PODs completed in the factory (shower and bath versions)
- 69 PODs modules
- Produced with the highest waterproofing protection parameters





