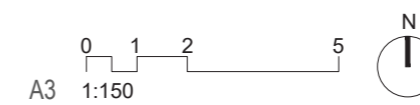


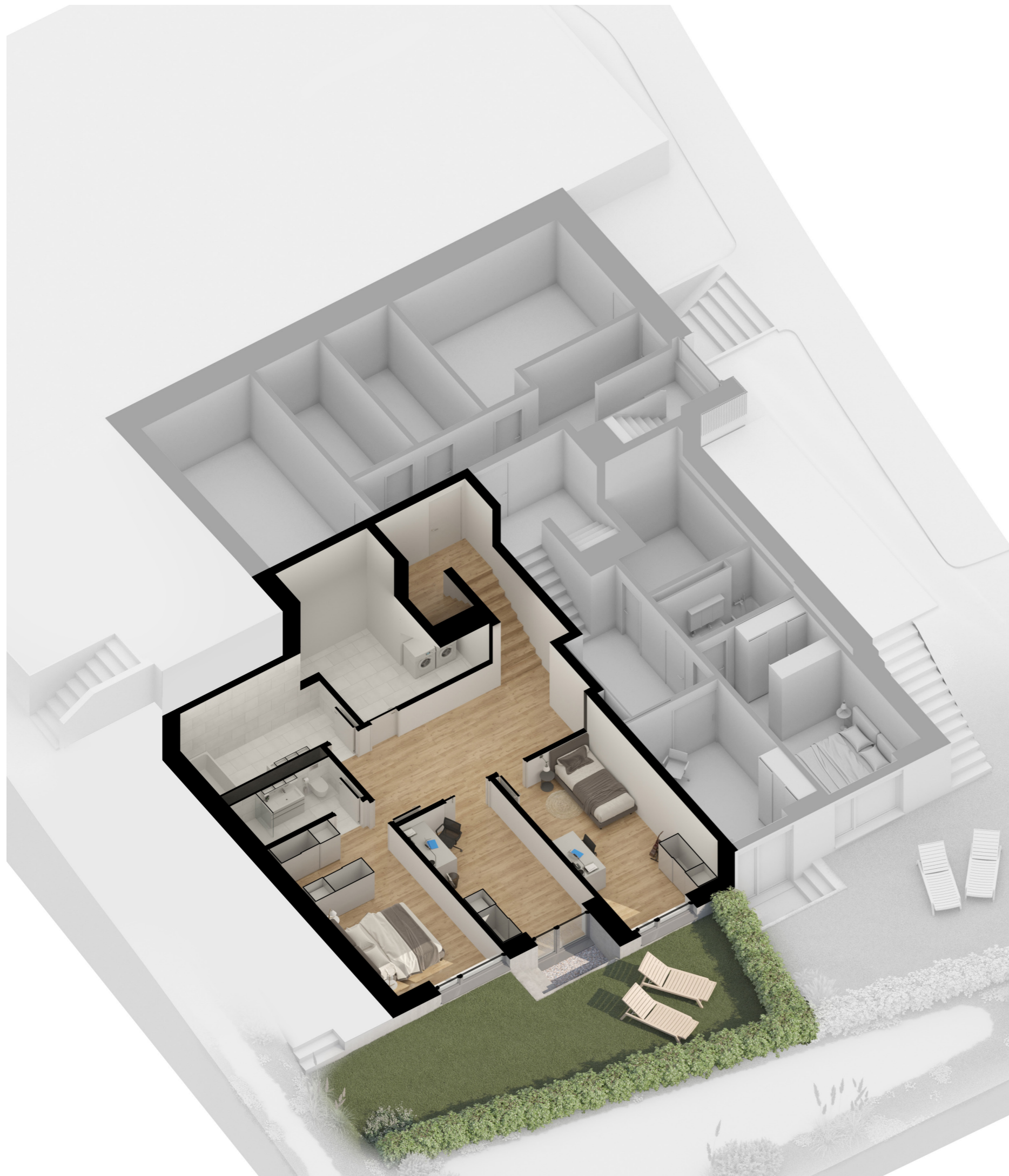
WHG 01

4 ½ Zimmer

Erdgeschoss

BGF	144.3 m²
NWF	139.7 m ²
Wintergarten	10.8 m ²
Sitzplatz	30.3 m ²
Keller	11.4m ²
Gartenfläche	ca 45 m ²



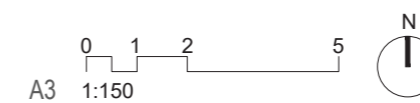


WHG 01

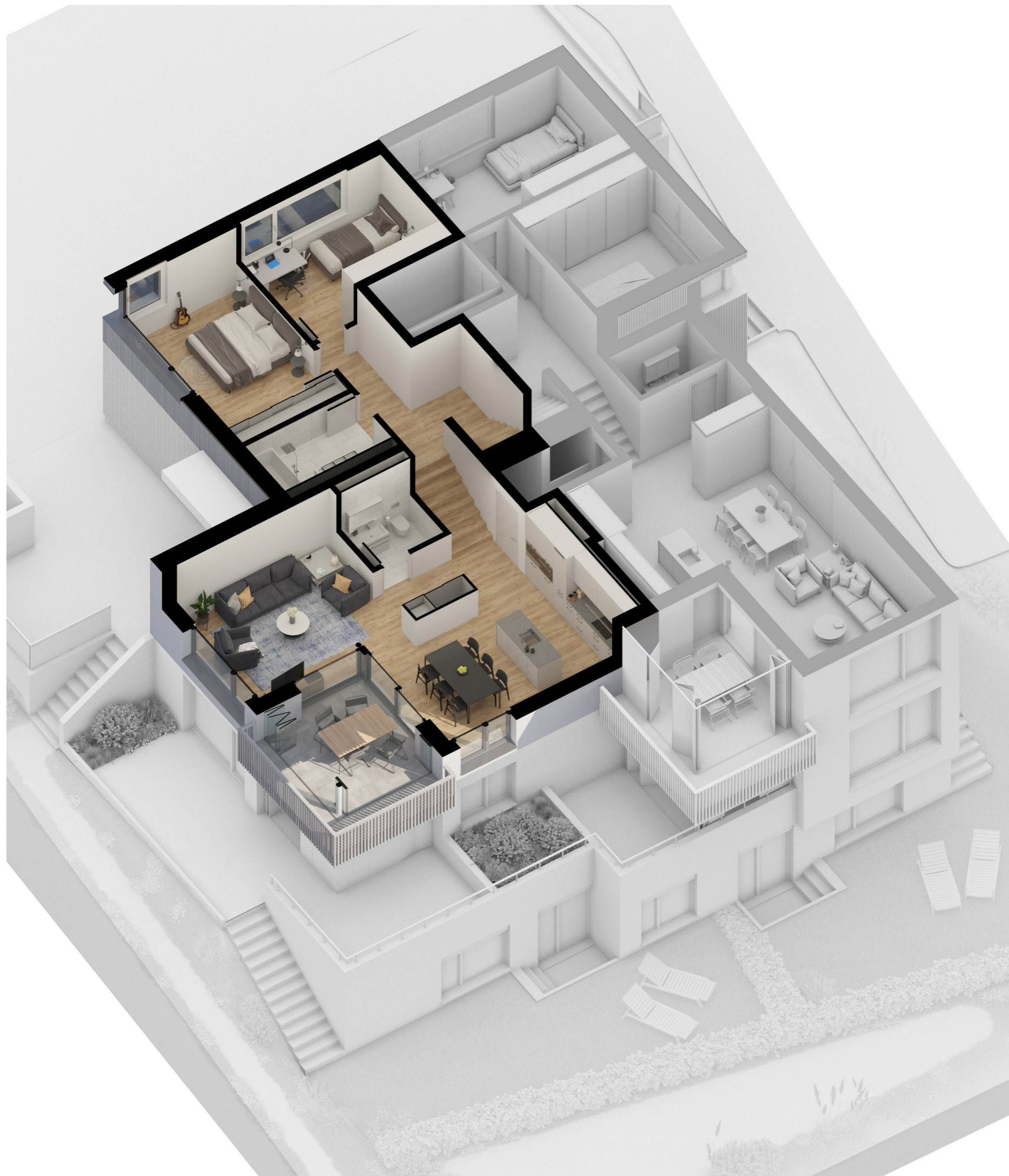
4 ½ Zimmer

Untergeschoss

BGF	144.3 m²
NWF	139.7 m ²
Wintergarten	10.8 m ²
Sitzplatz	30.3 m ²
Keller	11.4m ²
Gartenfläche	ca 45 m ²



A3 1:150

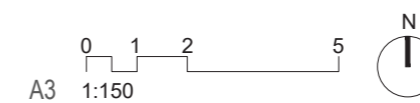


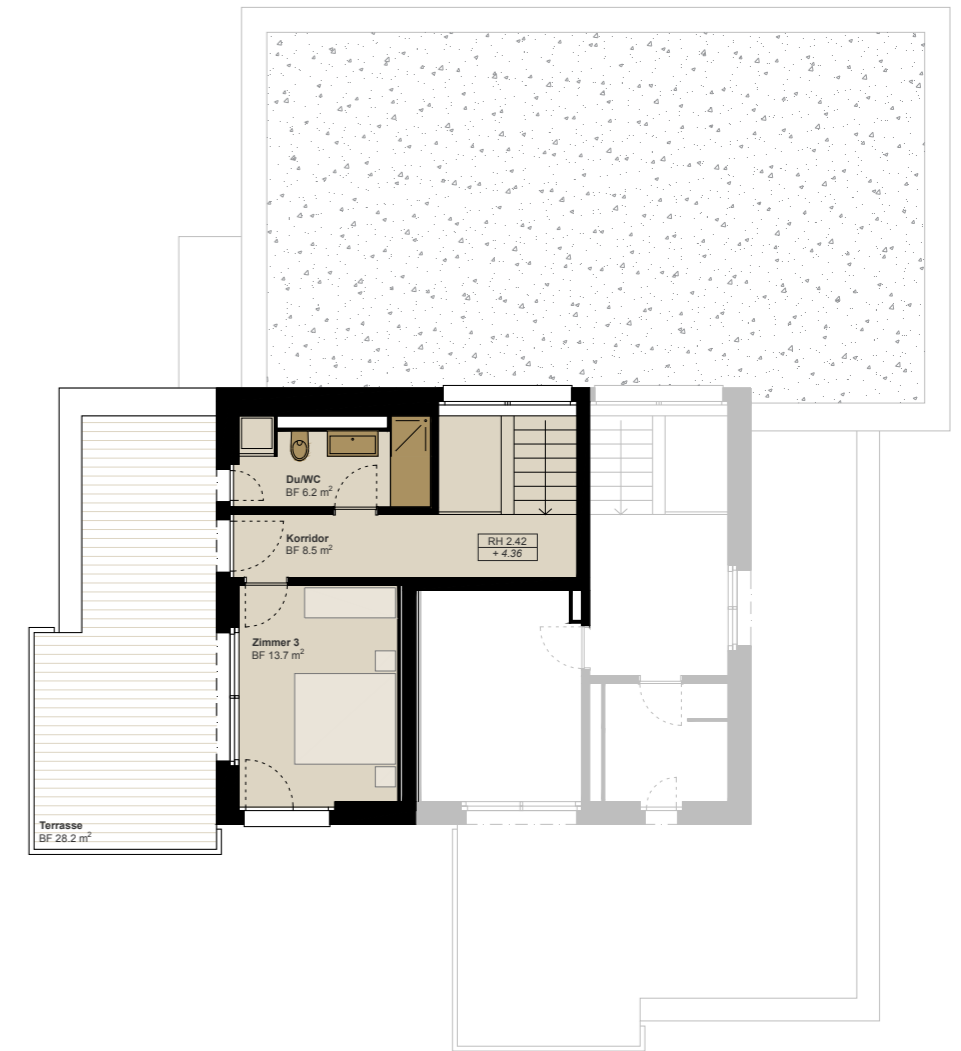
WHG 101

4 ½ Zimmer

1.Obergeschoss

BGF	131.9 m²
NWF	128.0 m ²
Wintergarten	10.8 m ²
Balkon / Terrasse	34.0 m ²
Keller	8.4 m ²





WHG 101

4 ½ Zimmer

Attika

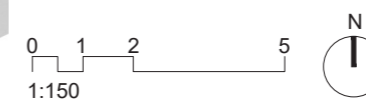
BGF 131.9 m²

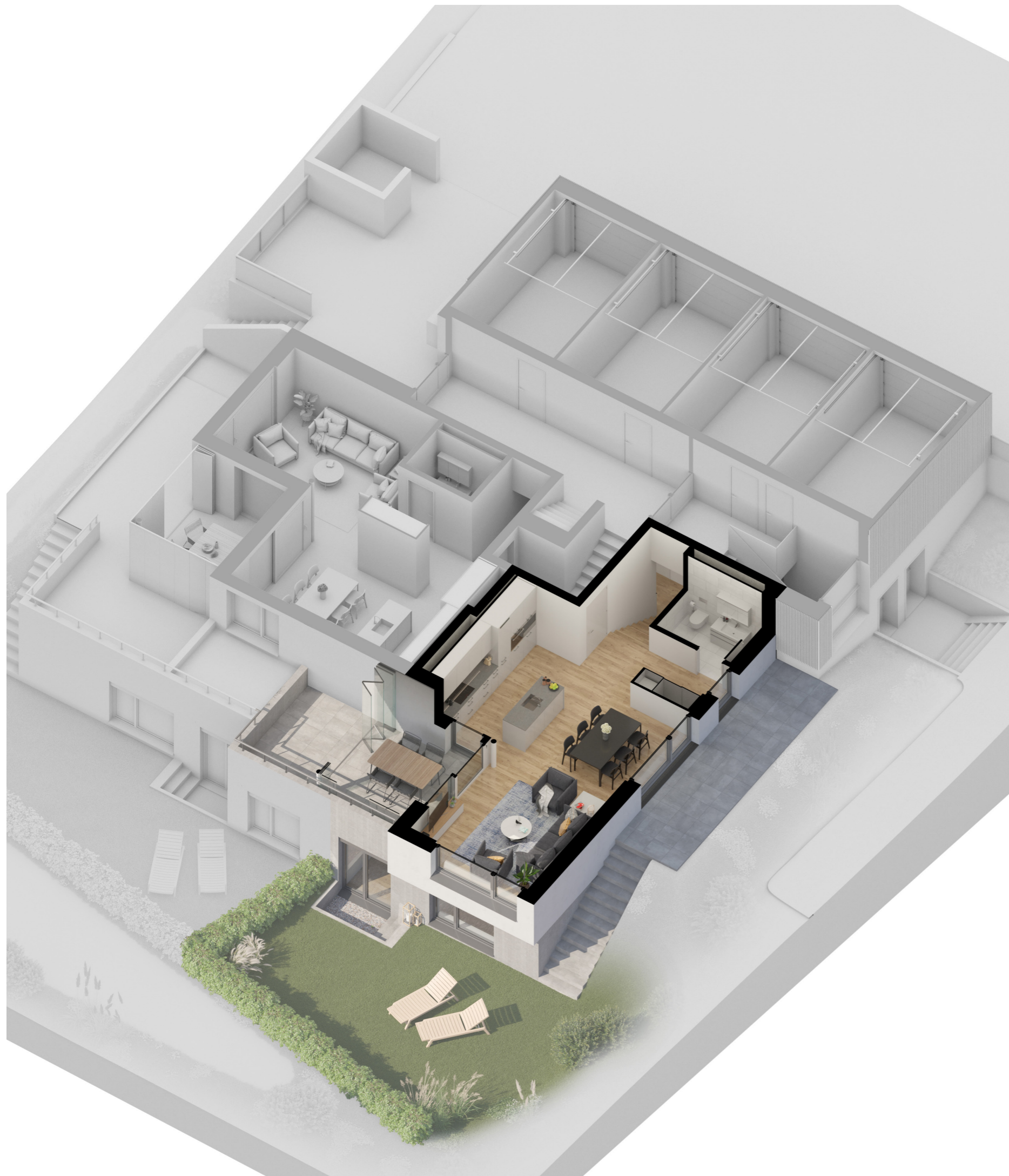
NWF 128.0 m²

Wintergarten 10.8 m²

Balkon / Terrasse 34.0 m²

Keller 8.4m²



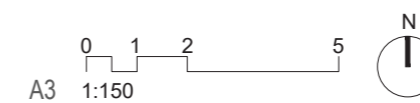


WHG 02

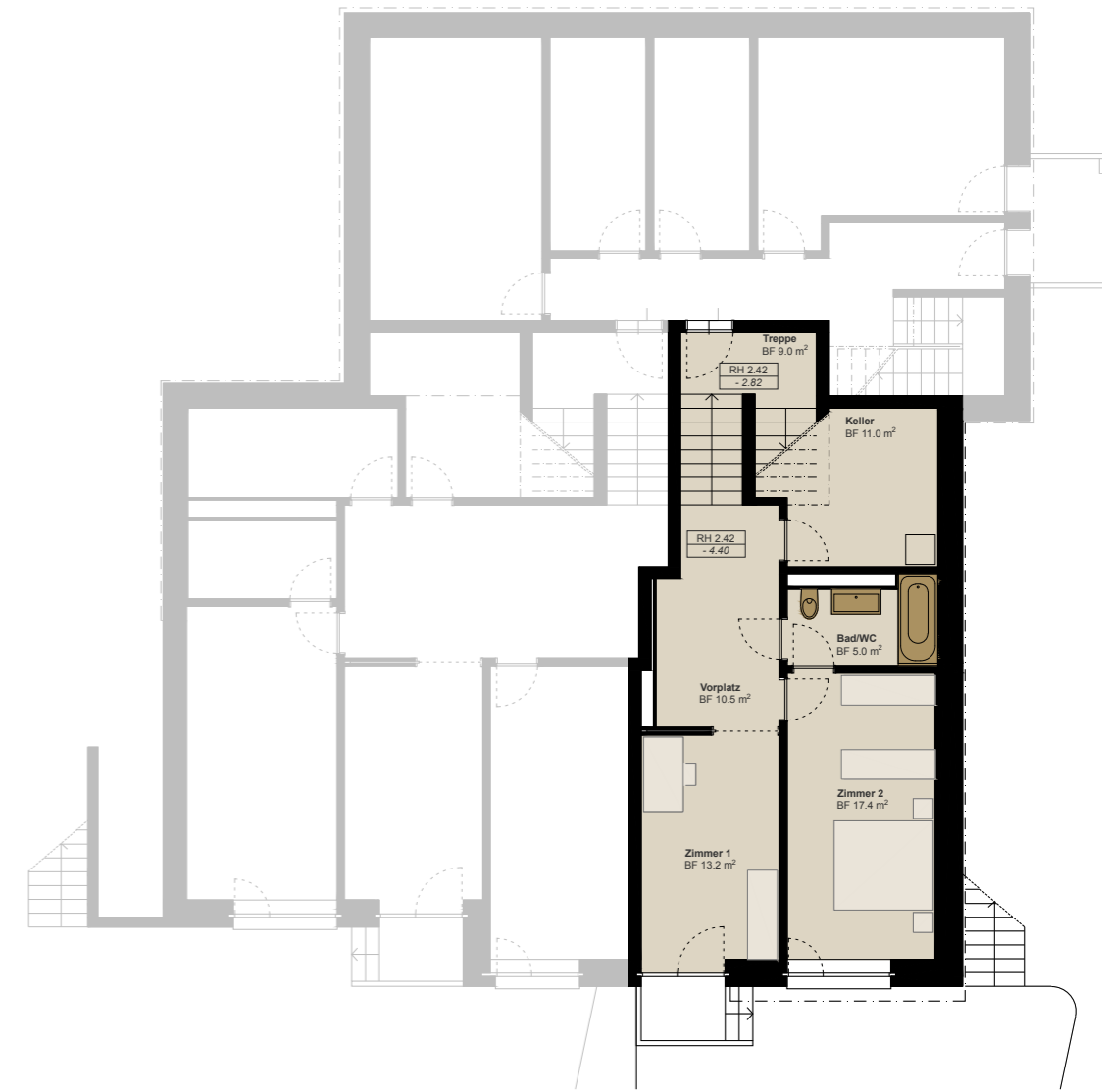
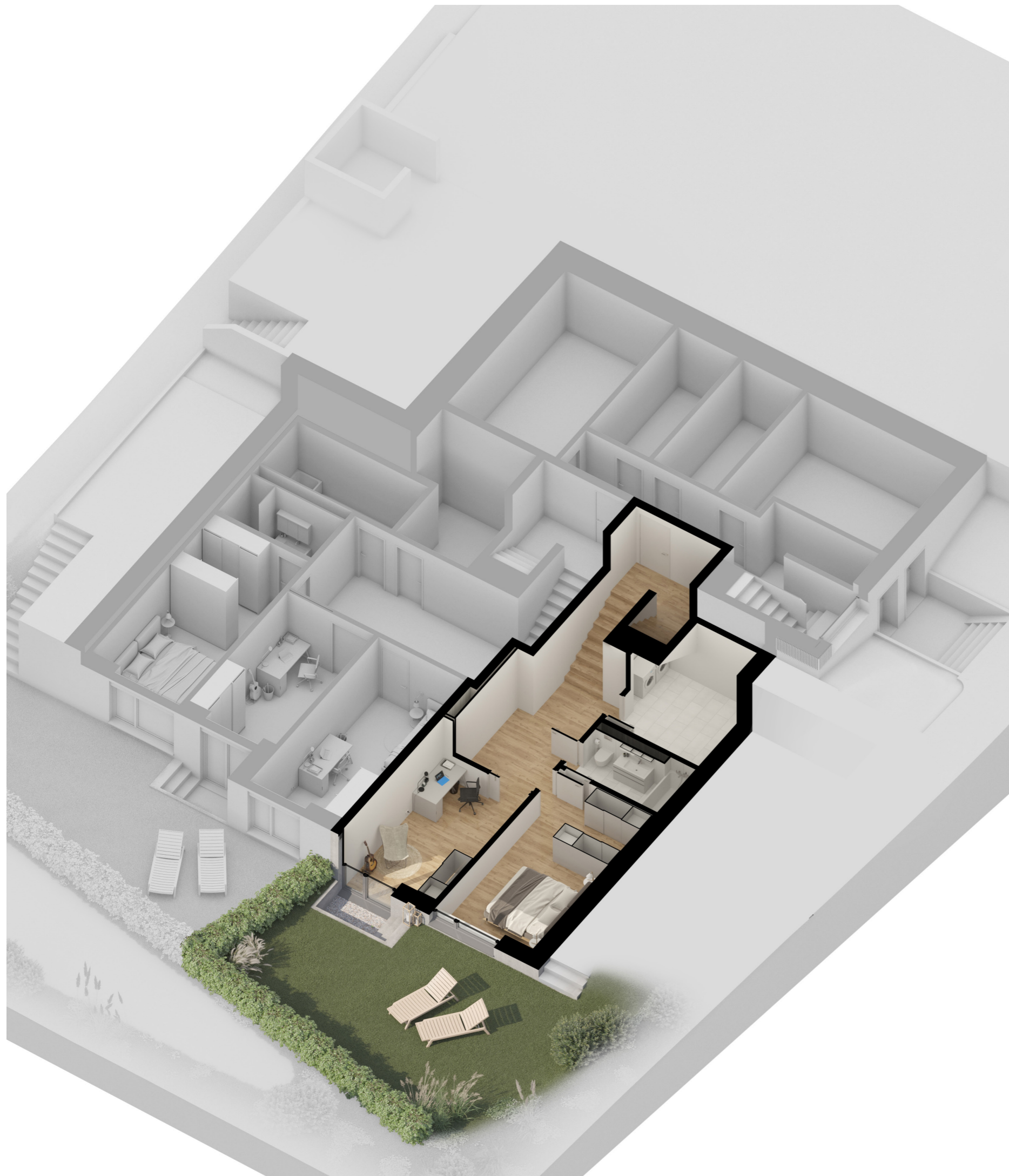
3 ½ Zimmer

Erdgeschoss

BGF	106.8 m²
NWF	104.4 m ²
Wintergarten	10.5 m ²
Sitzplatz	24.4 m ²
Keller	11.0 m ²
Gartenfläche	ca 40 m ²



A3 1:150



WHG 02

3 ½ Zimmer

Untergeschoss

BGF 106.8 m²

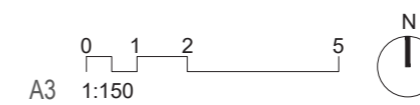
NWF 104.4 m²

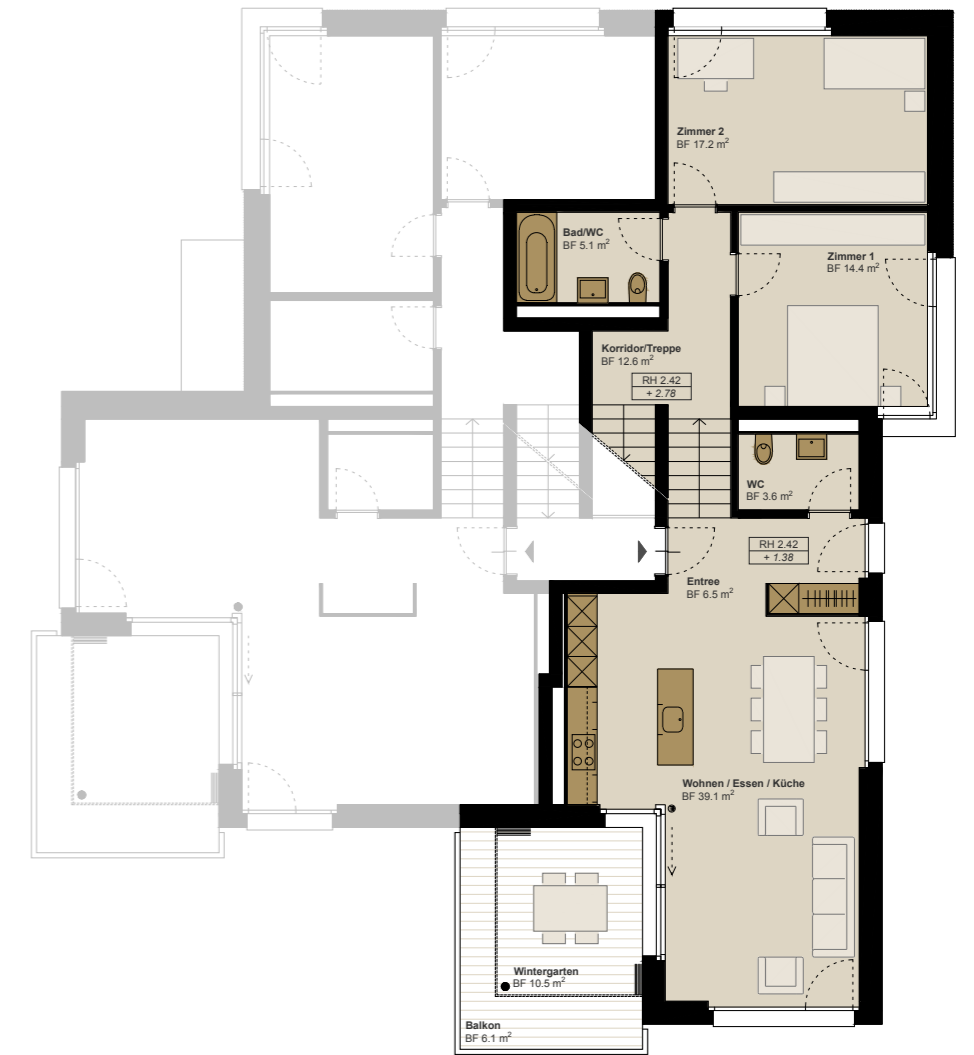
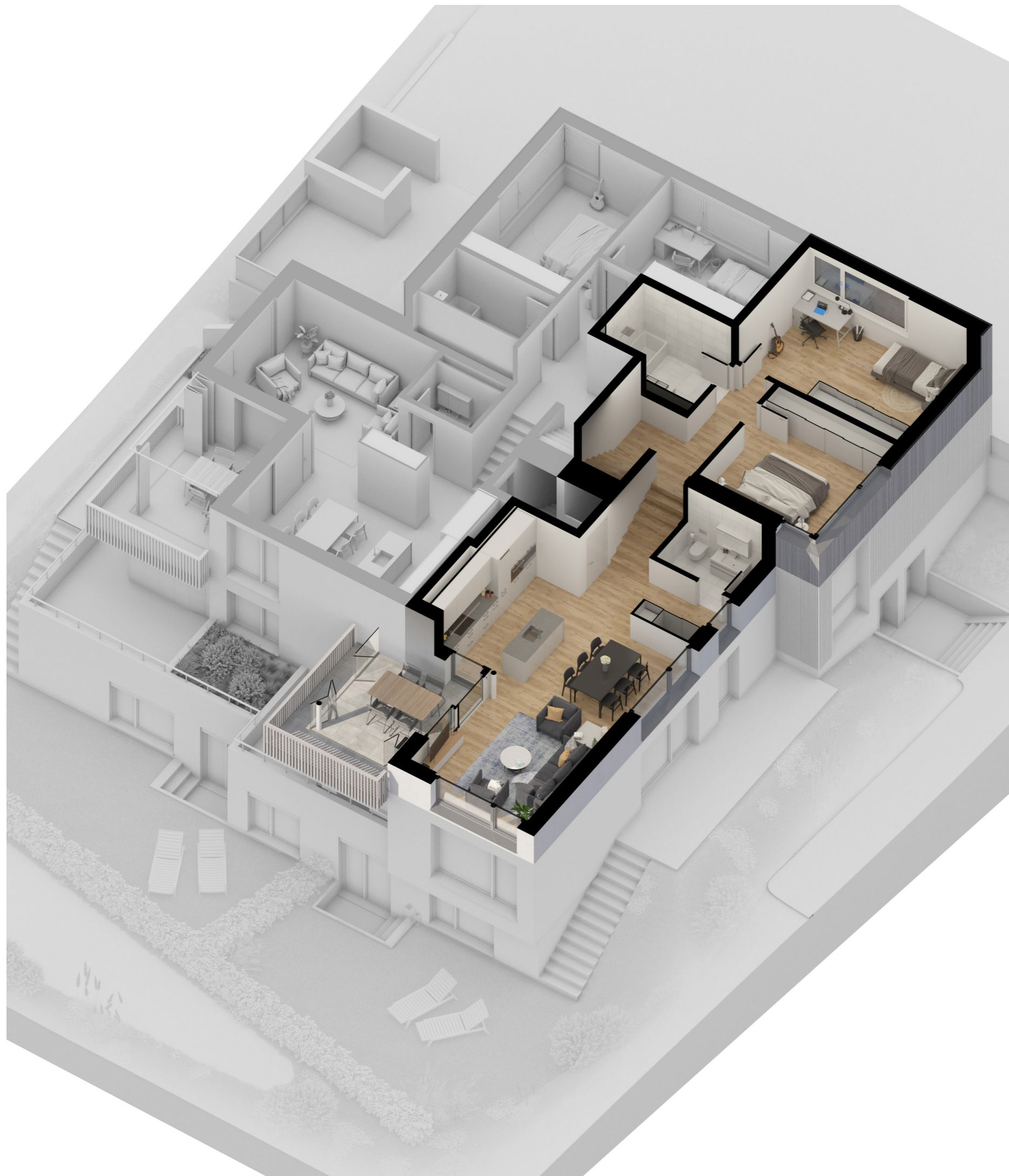
Wintergarten 10.5 m²

Sitzplatz 24.4 m²

Keller 11.0 m²

Gartenfläche ca 40 m²



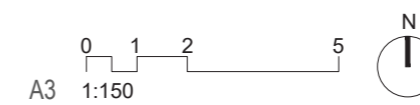


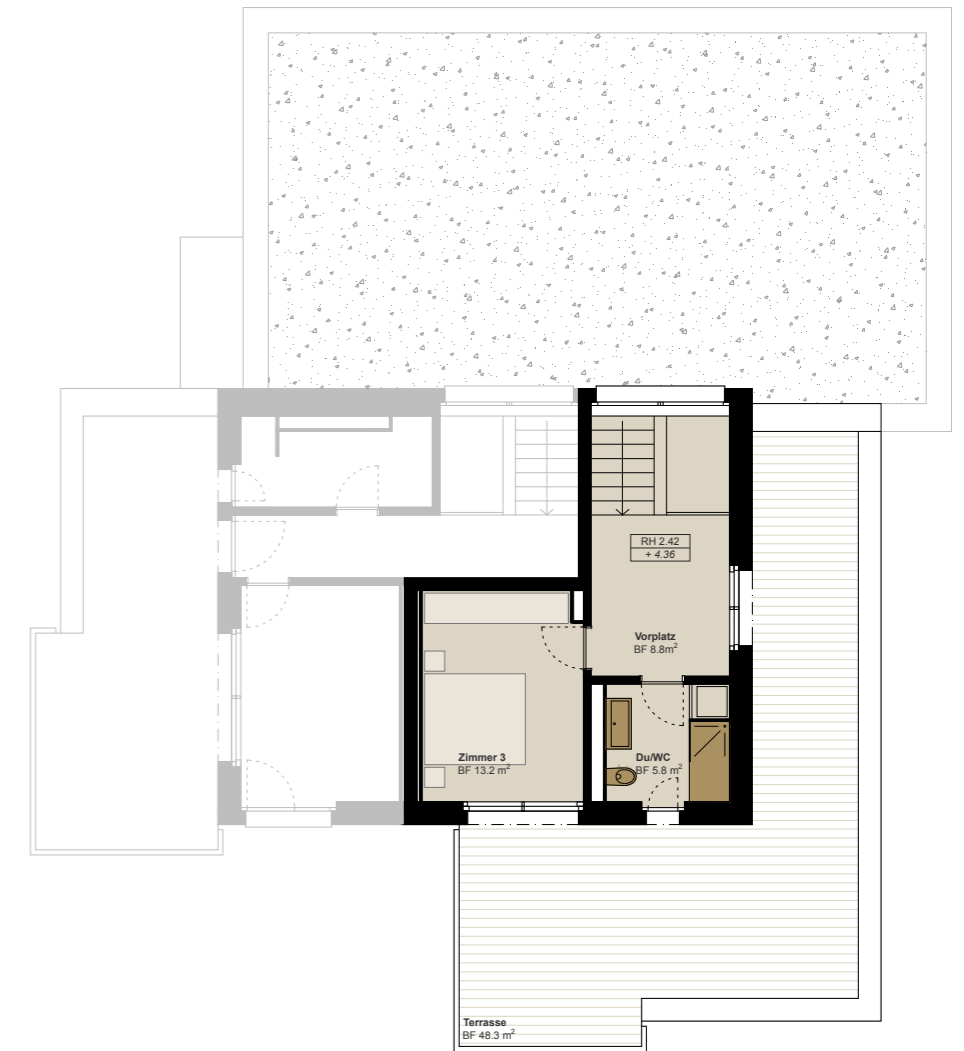
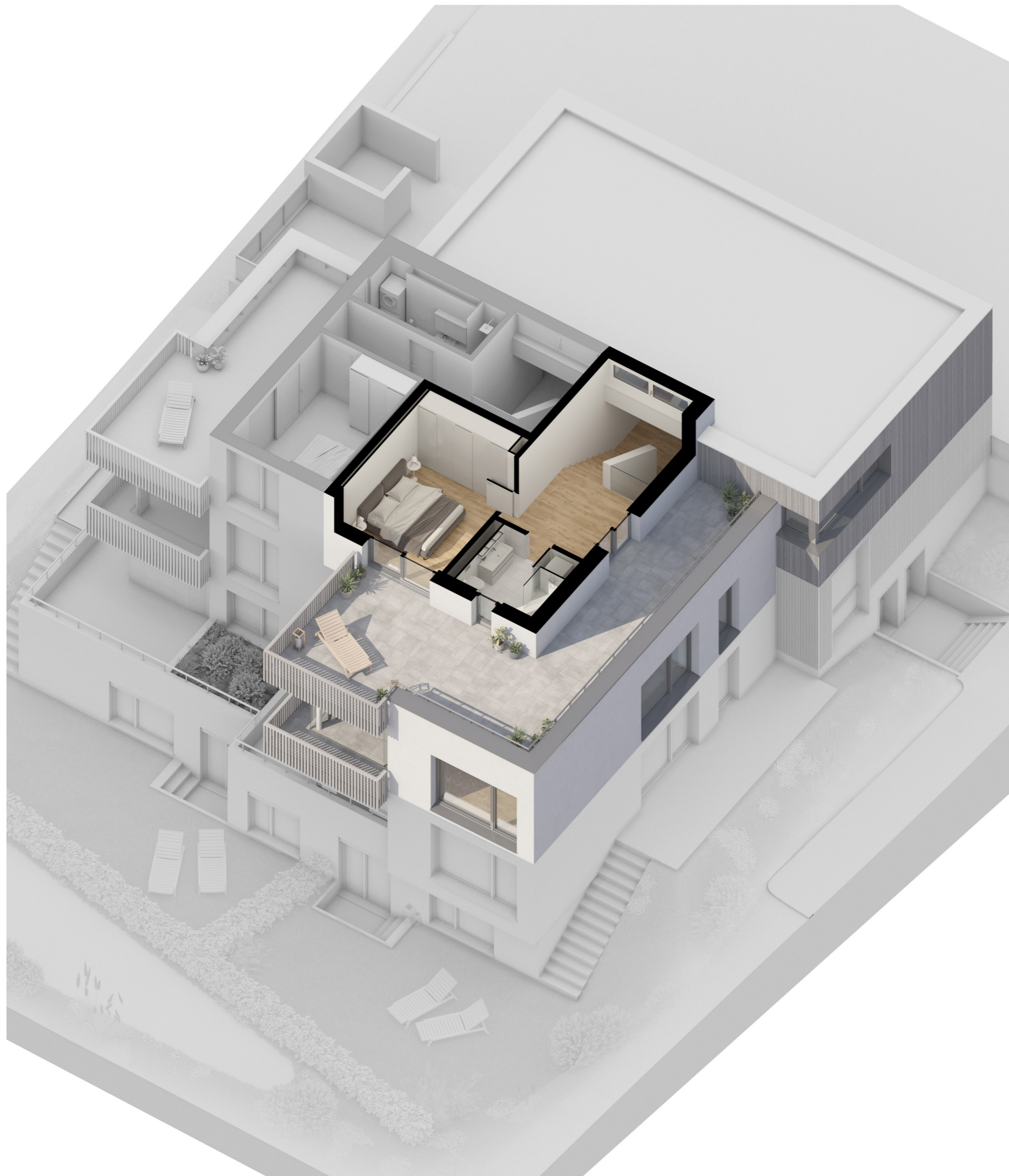
WHG 102

4 ½ Zimmer

1.Obergeschoss

BGF	131.0 m²
NWF	126.5 m ²
Wintergarten	10.5 m ²
Balkon / Terrasse	54.4 m ²
Keller	8.4 m ²





WHG 102

4 ½ Zimmer

Attika

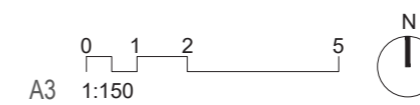
BGF 131.0 m²

NWF 126.5 m²

Wintergarten 10.5 m²

Balkon / Terrasse 54.4 m²

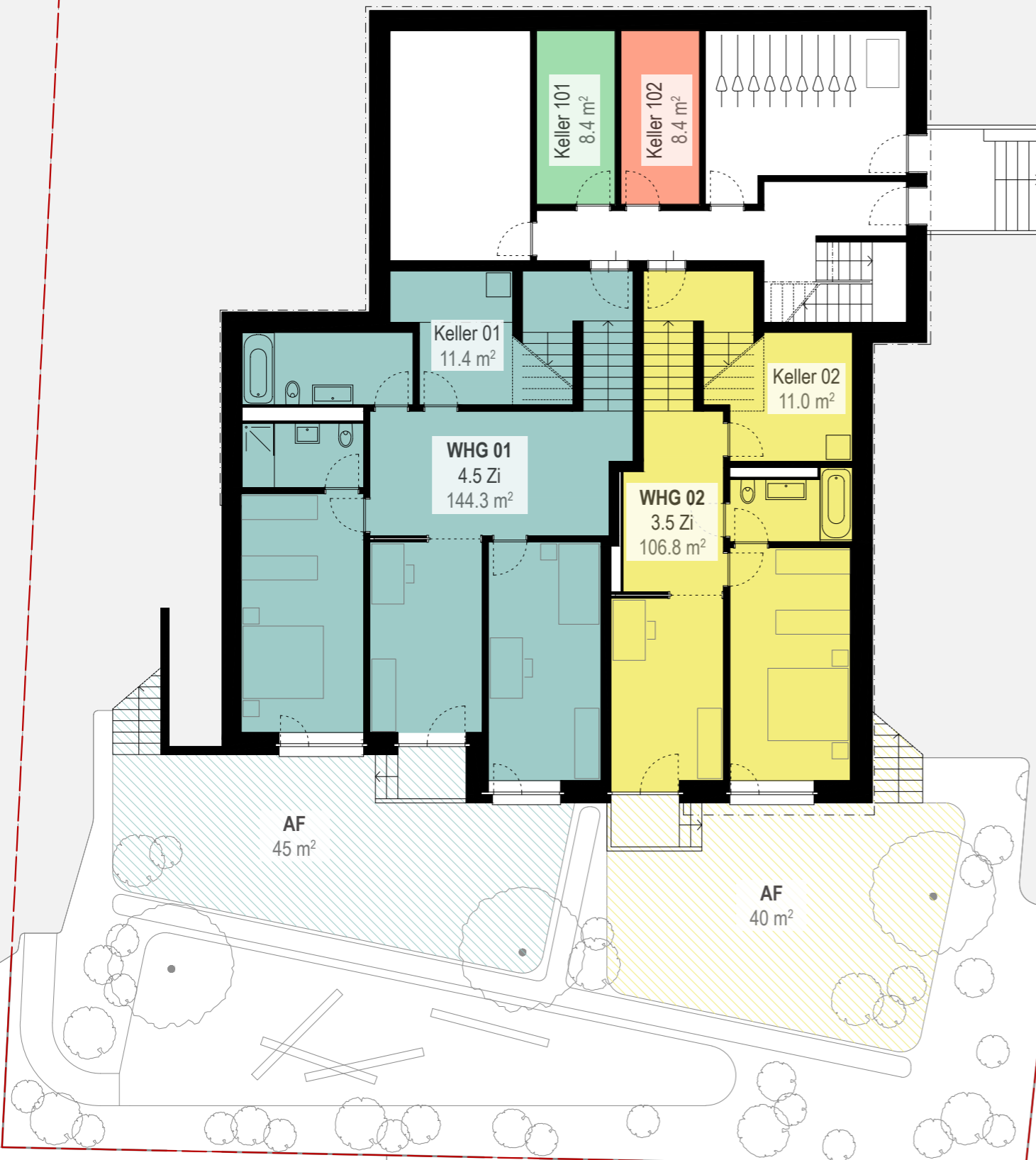
Keller 8.4 m²



Erdgeschoss



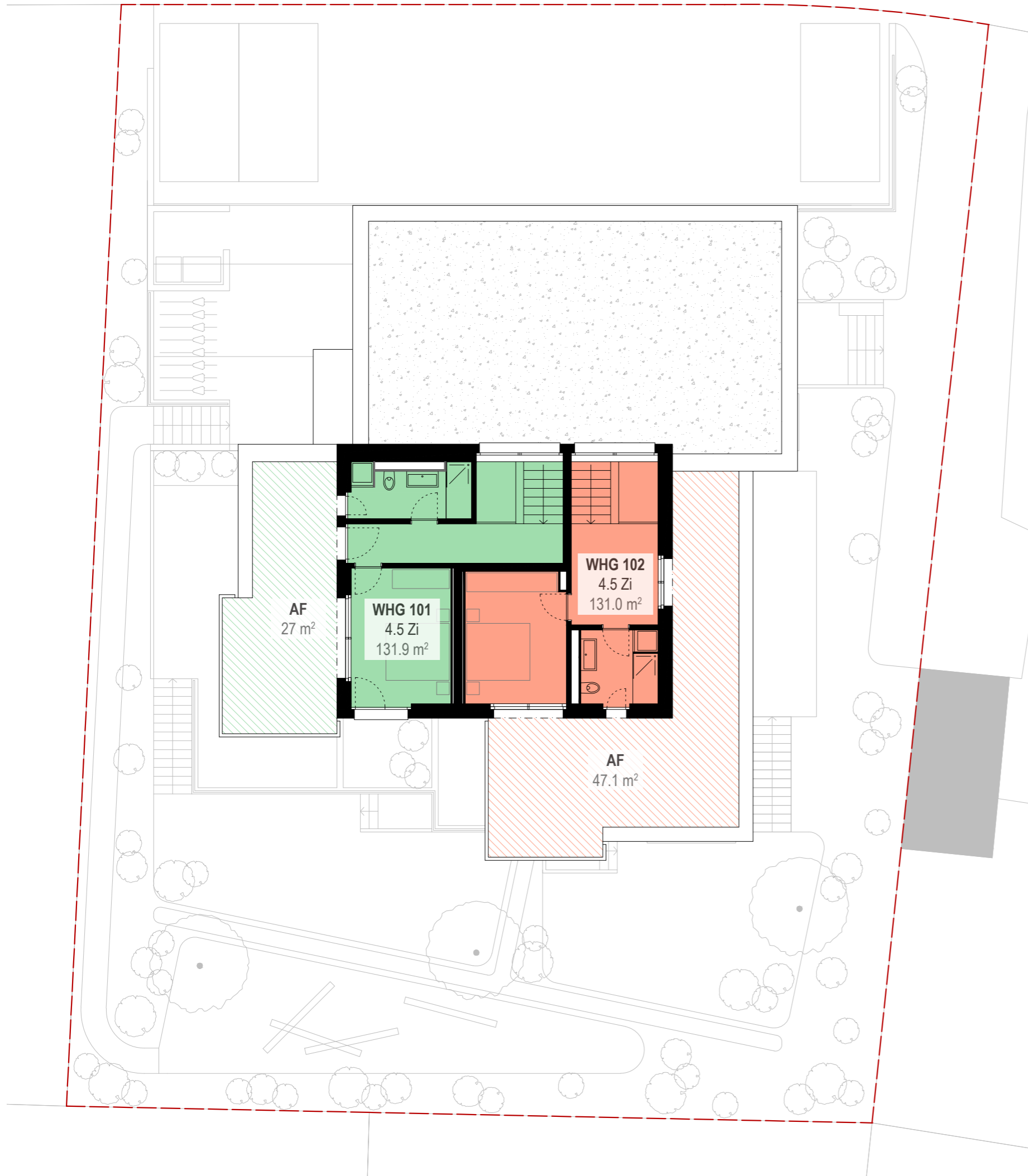
Untergeschoss



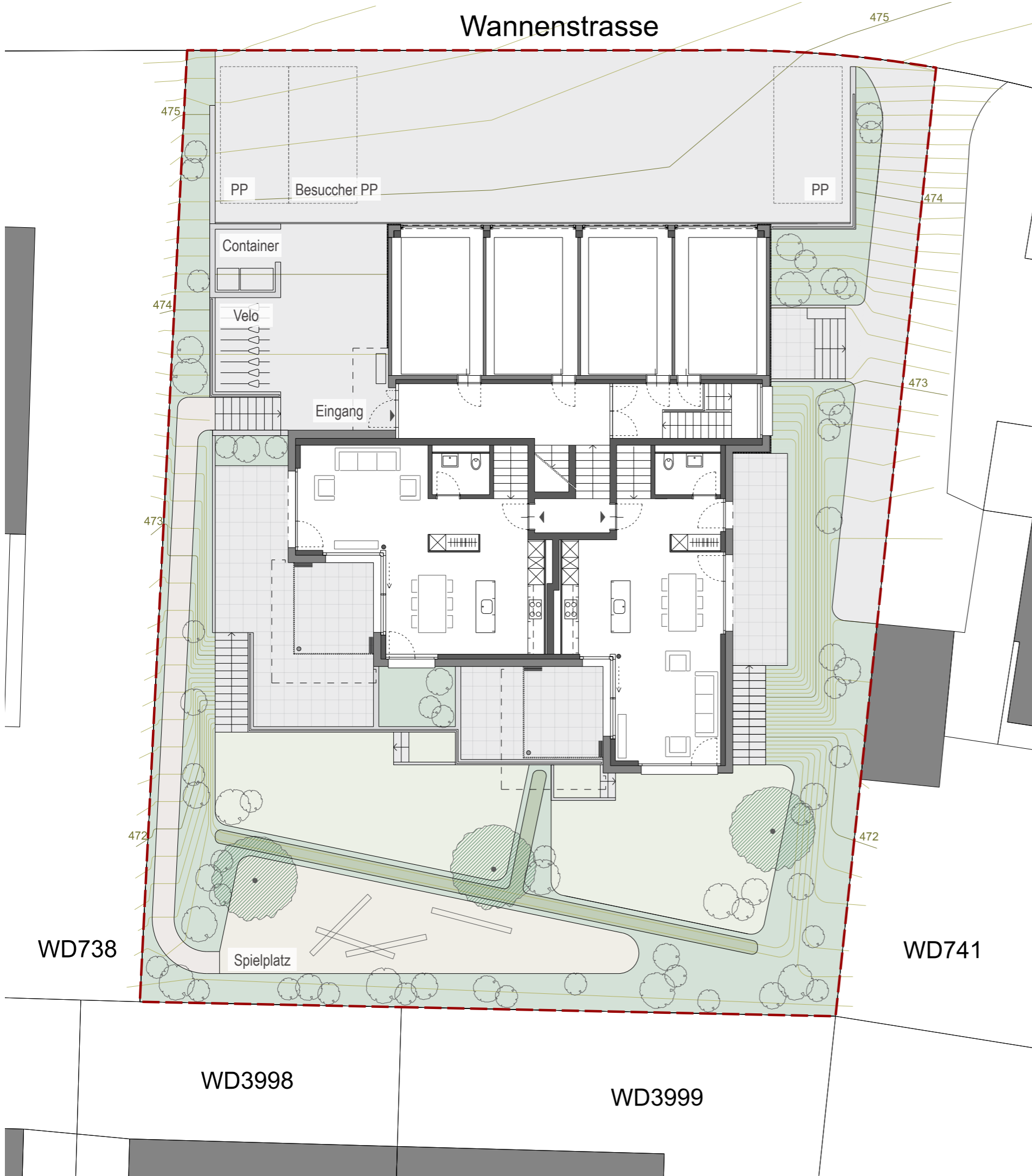
1.Obergeschoss

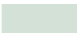



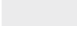





Attika



Umgebungsplan



-  Böschungen und Sichtschutzbeete:
Bodendecker und Sträucher
-  Ruhefläche: Rasen
-  Sichtschutz entlang «öffentlichem Raum»:
Hecke (z.B. Liguster)
-  Spiel-/Aufenthaltsbereich: Mergelbelag / Spielgeräte
(z.B. Sandkasten und Wippe)
-  Fussweg: Mergelbelag
-  Hartbelag (z.B. Asphalt)
-  Sitzplatz (z.B. Betonplatten)
-  Blütensträucher (z.B. Flieger, Kornelkirsche, Felsenbirne, etc.)
-  Einheimische Bäume (z.B. Feldahorn, Kirsche, Spitzahorn, etc.)